

Courtesy of Finnish Environment Institute

MONITORING OF PHYTOPLANKTON

Spatial distribution of phytoplankton and chlorophyll-a may vary considerably in lakes. AISA hyperspectral data providing seamless coverage used for phytoplankton and chlorophyll-a concentration and point source pollution monitoring in lakes is a cost effective solution compared to water sampling at a few fixed stations.

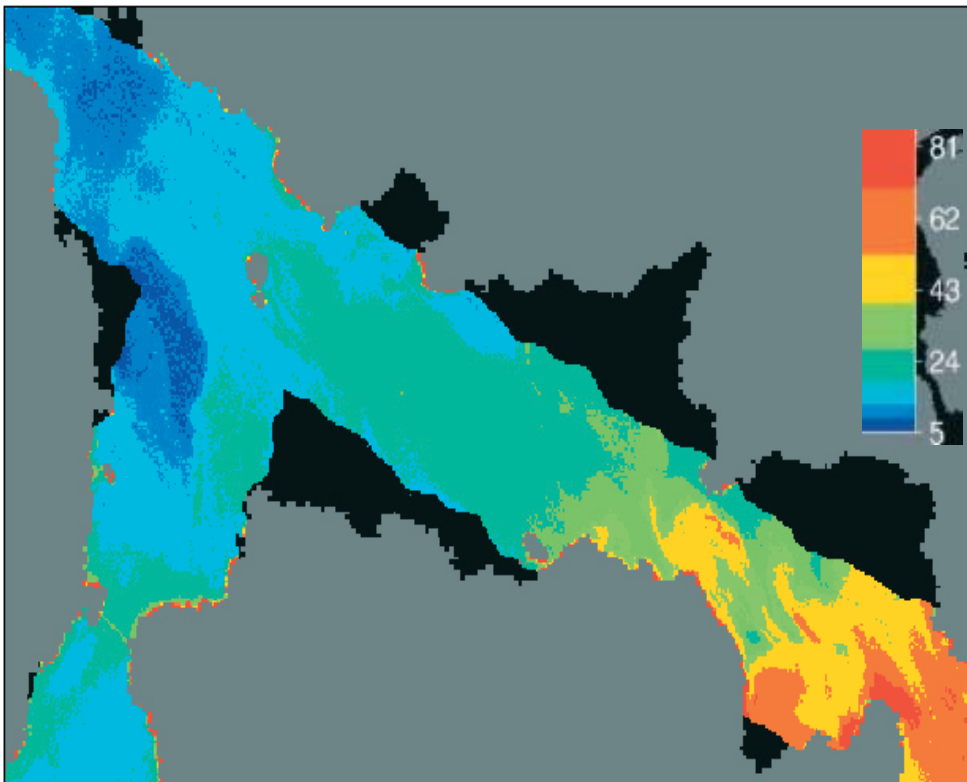


Figure 1. Phytoplankton concentration.