

WETLANDS SAMPLE IMAGERY

Courtesy of  SPECTRUM
MAPPING, LLC

This imagery was acquired over a stretch of wetlands and illustrates its spectral and spatial variability. The strips of vegetation seen in the upper portion of the imagery are areas of an undesirable wetland plant species.

The left image is a typical imagery product with 3 band displays forming a false colour composite.

The middle image is a composite of 3 MNF (Minimum Noise Fraction) images containing 34 discrete spectral bands of information. With the hyperspectral images it is possible to demonstrate the depth of spectral information.

The right hand image is a simple example of the inherent value of digital data in that it allows for such procedures as automatic vector and polygon generation.

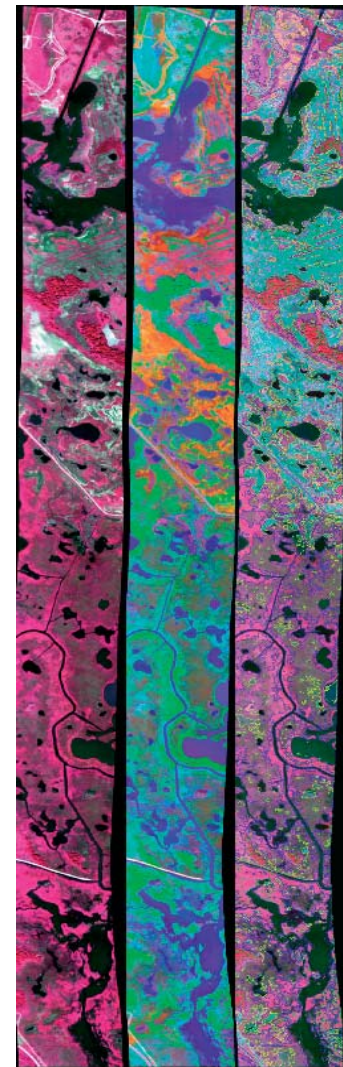


Figure 1. Wetlands imagery.